



Mindfulness Training Reduces PTSD Symptoms and Improves Stress-Related Health Outcomes in Police Officers

Daniel W. Grupe¹ · Chad McGehee¹ · Chris Smith² · Andrew D. Francis¹ · Jeanette A. Mumford¹ · Richard J. Davidson^{1,3,4}

Published online: 29 November 2019

© Society for Police and Criminal Psychology 2019

Abstract

Law enforcement officers are regularly exposed directly and indirectly to a wide variety of traumatic stressors, which take place against a backdrop of high levels of organizational stressors. Consequently, this group is at elevated risk for posttraumatic stress disorder (PTSD) and other negative physical and mental health outcomes, yet there are few empirically supported interventions to proactively mitigate the effects of occupational stress for this population. Recent studies suggest that training in mindfulness meditation may reduce perceived stress and improve related physical and mental health outcomes in this group. We sought to demonstrate feasibility, acceptability, and adherence for an 8-week mindfulness training program in 30 officers from a mid-sized, Midwestern US police department, replicate findings of improved stress-related health outcomes, and provide novel evidence for reduced PTSD symptoms. All 30 officers completed the training, with high rates of class attendance, substantial out-of-class practice time, and good acceptability of the training and teachers. We replicated findings of reduced post-training perceived stress, sleep disturbances, anxiety, and burnout. We also identified novel evidence for reduced PTSD symptoms that persisted at a 5-month follow-up assessment. These results indicate key targets for future investigation in larger, mechanistic, randomized controlled trials of mindfulness training in police officers.

Keywords Mindfulness · Police · Perceived stress · Posttraumatic stress disorder (PTSD) · Sleep

Introduction

The many stressors of police work can have profound consequences for the health and well-being of law enforcement officers (LEOs). Chronic work stress is a major contributor to cardiovascular disease (CVD) and CVD risk factors, including obesity and metabolic syndrome, in current and retired LEOs (Hartley et al. 2012; Ramey et al. 2009). Sleep disturbances are endemic among officers working both day and night shifts (Neylan et al. 2002), with one study finding

that 40% of officers screened positive for a sleep disorder and 30% reported excessive daytime sleepiness (Rajaratnam et al. 2011). Clinically significant symptoms of depression have been reported in 12–16% of officers (Hartley et al. 2012; Violanti et al. 2006), and a study of midwestern US police officers found that 25% screened positive for posttraumatic stress disorder (PTSD) or subthreshold PTSD (Chopko et al. 2018). Concerns about stigma and perceived weakness, however, prevent many officers from seeking treatment or employer assistance (Fox et al. 2012).

Crucially, challenges to officer well-being are felt not just by these individuals but by the entire community. For example, one study found that officers who screened positive for sleep disorders—which co-occurred with depression, anxiety, and burnout—were more likely to commit errors due to fatigue, express anger toward others, and garner complaints from citizens (Rajaratnam et al. 2011). “Officers who are well,” writes Lt. Rich Goerling of the Hillsboro (OR) Police Department, “will provide better police services; officers who are resilient will sustain wellness through acute and chronic trauma ... Communities should demand police officers that are well and resilient” (Goerling 2012).

✉ Daniel W. Grupe
grupe@wisc.edu

¹ Center for Healthy Minds, University of Wisconsin-Madison, 625 West Washington Ave, Madison, WI 53703, USA

² Academy for Mindfulness, LLC, Glendale, WI, USA

³ Department of Psychology, University of Wisconsin-Madison, Madison, WI, USA

⁴ Department of Psychiatry, University of Wisconsin-Madison, Madison, WI, USA

Most salient among the stressors of police work are acute, potentially traumatic events (or “critical incidents”), which are experienced by almost 90% of urban police officers in their first year on the job (Galatzer-Levy et al. 2013). Somewhat surprisingly, more routine aspects of the police work environment—including both operational stressors (e.g., shift work, court cases, working alone in dangerous areas) and organizational stressors of bureaucratic police organizations (e.g., staff shortages, lack of resources, insufficient support from leadership)—have been cited by LEOs as a greater source of stress than critical event exposure (Brown and Campbell 1990; Liberman et al. 2002). Moreover, when routine job stress and critical incident exposure have been assessed in the same officers, the stress from officers’ daily work environment shows stronger relationships with both sleep disturbances (Neylan et al. 2002) and PTSD symptoms (Maugen et al. 2009) than does critical incident exposure. As such, providing officers with strategies and skills to cope with daily occupational and organizational stressors is critical for improving stress-related outcomes in this population.

Unfortunately, few evidence-based stress-management interventions have been developed for this group that are sensitive to specific occupational and cultural considerations. A 2012 review concluded that existing programs had “no significant effect on psychological, behavioral, or physiological outcomes” (Patterson et al. 2012). One important consideration in developing a stress-management intervention for police officers is that it be skill-based and embodied, and not merely didactic in nature, in fitting with the training-focused culture of policing. Ideally, the skills or techniques offered by such a training could be integrated into work to address daily stressors, and not focused on critical incidents alone or divorced from officers’ work entirely. Further, it is important to focus on developing strengths and building capacity to work with stressful events, as an intervention that focuses on addressing problems would elicit less engagement from police officers who are hesitant to seek treatment or self-identify as having emotional problems or mental health concerns.

Mindfulness-based interventions (MBIs) may provide a culturally appropriate and effective means of addressing LEO stress and its deleterious consequences. Beginning with mindfulness-based stress reduction (MBSR), originally developed by Jon Kabat-Zinn for the treatment of chronic pain, a number of MBIs have sprung up over the last 30 years. All of these interventions seek to cultivate intentional, non-judgmental awareness of thoughts, emotions, and sensations through sitting and walking meditation, movement practices, self-inquiry, and group discussions. The embodied and skill-based nature of MBIs, with practices that can be integrated into the activities of daily living, are a good fit for the culture of policing. Further, while one need not be suffering from any particular ailment to engage with an MBI, meta-analyses show consistent reductions in perceived stress, anxiety, and

depression (Goyal et al. 2014; Khoury et al. 2013), with some evidence for improved sleep (Black et al. 2015) and reductions in inflammatory markers that confer risk for CVD, depression, and PTSD (Black and Slavich 2016).

Mindfulness-Based Resilience Training (MBRT), the first MBI tailored specifically for LEOs and other first responders, has been shown to reduce perceived stress, depression, anxiety, disrupted sleep, burnout, and self-reported anger in a pilot feasibility study (Christopher et al. 2016) and follow-up randomized controlled trial (Christopher et al. 2018). It is important to expand on the early success of these studies by investigating MBIs in additional police departments and studying additional outcome measures. One question of interest that has not yet been addressed is whether mindfulness training may reduce symptoms of PTSD in police officers, as has been recently demonstrated in military veterans (Polusny et al. 2015).

In collaboration with the Madison Police Department, we conducted a pilot study of an MBI similar to MBRT in 30 police officers. First, we sought to demonstrate feasibility, acceptability, and adherence of a modified mindfulness training curriculum in a new police department and geographical region, critical preliminary work for future well-powered randomized trials. Second, we attempted to replicate previously reported improvements in perceived stress, sleep quality, depression, anxiety, and burnout following 8 weeks of mindfulness training (Christopher et al. 2016, 2018). Third, we tested the novel question of whether mindfulness training would lead to reduced symptoms of PTSD in these officers.

Methods

Participants

Participants for this study were sworn law enforcement officers employed by the Madison Police Department (MPD) serving in non-command positions. To yield a representative and generalizable sample, the only exclusionary criteria were previous participation in MBSR or other mindfulness interventions, significant meditation experience, or schedules that precluded class participation. Recruitment emails were sent to all department staff on behalf of the research team, and flyers were posted at all district stations. The PI also presented information about the study at the Officer Advisory Council meeting, and at officer briefings during each major shift change. Interested officers contacted research staff, who conducted a brief phone screening interview and scheduled participants for an in-person assessment. We enrolled a total of 30 participants in two cohorts of 15 officers each, with one cohort enrolled in September 2016 and one in February 2017.

Importantly, MPD allowed its officers to take part in classes during work hours or to earn compensatory time for taking part in classes outside of scheduled work hours. Class times were identified jointly with the department such that they would be minimally disruptive to work schedules, thus facilitating participation by as many officers as possible.

Assessments

In-person pre-training (T1) and post-training (T2) assessments were held in private rooms in a clinical setting in the 2 weeks prior to the first class (mean \pm SD = 7.8 ± 4.8 days, range = 1–16) and the 3 weeks following the final class (mean \pm SD = 11.8 ± 5.8 days, range = 1–21). At the first visit, participants completed informed consent, and participants received monetary compensation for all research activities, which took place while officers were not working.

Each visit began with the application of peripheral psychophysiological sensors, consisting of skin conductance and EKG electrodes and an abdominal breath belt, and psychophysiological data were collected using a BIOPAC MP-150 system during a 5-min resting baseline and each of 2 behavioral tasks. These tasks included the Affective Go/No-Go task (Hare et al. 2005), which assesses the impact of social-emotional stimuli on inhibitory control, and the Breath Count task (Levinson et al. 2014), a measure of sustained attention to the breath and mind wandering that has been put forth as a putative behavioral indicator of mindfulness. In the interest of space—and because these data were collected as exploratory measures for future, larger-scale research—details on psychophysiological and behavioral data analysis and results are not presented here.

Physical measures obtained by a nurse at each assessment included height, weight, hip-to-waist ratio, blood pressure, pulse, and a blood draw used to assay high-sensitivity C-reactive protein (hs-CRP), a marker of peripheral inflammation that shows reductions in some mindfulness interventions (Black and Slavich 2016). Self-report assessments included multiple measures obtained in a previous pilot study of MBRT in police officers (Christopher et al. 2016), allowing for a direct replication of previous findings in a separate department and with a modified mindfulness intervention, while including several novel outcomes (indicated with a *):

- The *Police Stress Questionnaire* (PSQ; McCreary and Thompson 2006) contains separate 20-item scales assessing perceived stress related to both *organizational stressors* (e.g., “dealing with coworkers,” “lack of resources,” and “bureaucratic red tape”) and *operational stressors* (e.g., “risk of being injured on the job,” “working alone at night,” and “feeling like you are always on the job”) of policing. We adapted the original measure to ask about stress over the past 1 month, rather than the past 6 months.

- The 10-item version of the *Perceived Stress Scale* (PSS; Cohen and Williamson 1988) assesses past-month appraisals of general stressors and one’s ability to cope with these stressors. Unfortunately, incorrect anchor points were displayed for the first cohort which resulted in uninterpretable values, so results for the PSS are not presented here.
- The *Oldenburg Burnout Inventory* (OLBI; Halbesleben and Demerouti 2005) is a 16-item measure of work burnout with separate subscales for exhaustion and disengagement;
- The *Pittsburgh Sleep Quality Inventory* (PSQI; Buysse et al. 1989) contains 10 items assessing subjective sleep quality and sleep disruptions over the past month.
- The *PTSD Checklist-Civilian Version** (PCL-C; Weathers et al. 1993) is a 17-item measure of DSM-IV PTSD symptoms over the past month that contains separate scales for re-experiencing, avoidance/numbing, and hyperarousal symptoms.
- The *Patient Reported Outcomes Measurement Information System* (PROMIS®; 43-item version) is a NIH Roadmap system that we used to assess depression, anxiety, fatigue, sleep disturbances, ability to participate in social roles and activities, pain interference, pain intensity, and physical function. All measures ask about symptoms over the past 7 days, other than physical and social function, which have no specified time frame.
- The *Work Limitations Questionnaire-Short Form** (WLQ-8; Lerner et al. 2002) contains 8 items assessing the impact of physical and mental health problems on work performance and productivity, resulting in a measure of at-work productivity loss.
- The 18-item version of the *Psychological Well-Being Scale** (PWB; Ryff and Keyes 1995) assesses 6 dimensions of eudaimonic well-being.
- The *Positive and Negative Affect Schedule** (PANAS; Watson et al. 1988) is a 20-item measure of trait levels of positive and negative affect.

In addition to these outcomes obtained at multiple assessments, at the T1 visit only, we collected basic demographic information and assessed lifetime exposure to 34 distinct types of critical incidents of policing using the *Critical Incident History Questionnaire** (CIHQ; Weiss et al. 2010). At the conclusion of the initial visit, participants were provided with a Fitbit Charge HR, which they were asked to wear at all times until their follow-up visit. These Fitbits were used to assess feasibility, acceptability, and adherence for future research that will investigate heart rate and objective sleep duration as primary outcomes, and data are not presented here.

In a follow-up remote assessment (T3) completed by 28/30 participants approximately 5 months after the end of the intervention (157.4 ± 13.7 days, range = 140–195), participants completed all self-report measures from T1 and T2 other than the WLQ-8, PWB, and PANAS.

Participants were invited to take part in semi-structured interviews about 6 months after the end of the intervention, which provided qualitative data on the impact of this training on officers' lives and the incorporation of mindfulness practices into their daily lives (15/30 officers completed these optional interviews). Data analysis is ongoing and results are not presented here.

Intervention

In consultation with the PI, two experienced mindfulness teachers created and co-taught an 8-week, 18-h mindfulness-based curriculum tailored for law enforcement officers, intended to support officer's resilience and well-being both on the job, in their personal lives, and in all the ways those two are interwoven (for an overview of the curriculum, see [Appendix](#)). The structure and content of this curriculum draws from Mindfulness-Based Stress Reduction (MBSR) and Mindfulness-Based Resilience Training (MBRT; Christopher et al. 2016)). The class content and delivery were also heavily influenced by interactions with officers during in-services, ride-alongs, and informal conversations in the year prior to the classes.

Classes were held at a police training facility for 2 h each week, other than a 4-h extended "day of practice" in week 7 (a structural feature adopted from MBRT). In consultation with the police department, we chose class times that would be minimally disruptive for officers' work schedules and held the 2 classes at different times of day to allow participation by a greater number of officers. Classes included (1) didactic instruction around operational definitions of mindfulness, stress, emotions, and scientific findings related to mindfulness practice; (2) practices including mindfulness of the breath and body, a body scan, mindful movement (including walking meditation and adapted yoga or tai chi), mindfulness of thoughts and emotions, mindful speaking and listening, mindful eating, and compassion practice; and (3) inquiry in dyads, triads, or the full group about participants' experiences in practice.

Participants were provided with guided practices recorded by the instructors and were encouraged to practice 6 days/week, starting with around 9 min/day and increasing to 20 min/day by the end of the training. This is a substantially lower request than other MBIs (including both MBSR and MBRT), but this population-specific adaptation prioritized regular, lighter engagement rather than longer practices that participants would be less likely to complete. In addition, participants were encouraged to engage in various "informal" practices to integrate practices into daily professional and personal activities. These practices involved drop-ins to become aware of present moment experience, or brief breath manipulations. Using paper or electronic logs, participants were asked to track the type and duration of formal practices, and the frequency with which they engaged in informal mindfulness practices, on a daily basis.

At the end of each weekly class, officers were asked to complete anonymous surveys regarding training acceptability. In addition, officers were invited to participate in a focus group held the week after the final class. These focus groups provided us with valuable feedback on the class location, timing, instructors, structure, and content.

Data Analysis

To test for differences in self-report measures between assessments, we conducted linear mixed effects analysis of repeated measures data using the lme4 package in R version 3.2.2, allowing us to retain participants with missing observations. Each model included fixed effects of Time (T1, T2, T3), Gender, and Years Police Experience and a random effect of Subject with a random intercept and fixed slope, e.g.:

$$\text{model} = \text{lmer}(\text{Outcome} \sim \text{Time} + \text{Gender} + \text{Years Policing} + (1 | \text{Subject}))$$

Each model initially included the interaction of Time with Gender and Years Policing, and additional fixed effects of Cohort and Cohort*Time. These interaction terms and the Cohort effect were removed using backwards model selection if they did not account for significant variance. For these multiple degree of freedom tests (e.g., the omnibus test of Time, or tests of models with and without interaction terms), deviance tests using the `anova.lmerModLmerTest()` function in R compared models with and without the fixed effect of interest.

For outcomes that showed a significant effect of Time, follow-up T1-T2 or T1-T3 *t* tests were conducted. Inferences for these tests used Satterthwaite's degree of freedom estimation supplied by the `lmerTest` library in R (<https://www.jstatsoft.org/article/view/v082i13/0>).

We tested for changes in practice variables across the 8-week intervention by modeling Time as a linear fixed effect and including a random intercept and random slope by subject, e.g.:

$$\text{model} = \text{lmer}(\text{Practice} \sim \text{Weeks} + (1 + \text{Weeks} | \text{Subject}))$$

Results

Feasibility, Adherence, and Acceptability

Feasibility: Recruitment, Screening, and Retention Outcomes

Across two recruitment waves, 57 officers (representing 12% of the sworn officers in the department) completed phone screening and 49 met inclusion criteria (the other 8 were ineligible due to scheduling conflicts ($n = 5$), job duties ($n = 2$), or prior meditation experience ($n = 1$)). From this participant pool, we enrolled a

group of officers of roughly equal gender balance that was representative of the department as a whole with regard to job title, shift, geographical district, race/ethnicity, and years of experience (see Table 1 for participant characteristics). All 30 officers completed the intervention and T1/T2 assessments, and 28/30 officers completed the T3 assessment 5 months later. These enrollment and retention data demonstrate excellent feasibility of delivering an 8-week mindfulness intervention to police officers in a research context.

Adherence: Class Attendance and Practice Reporting Outcomes

Adherence to the mindfulness training was uniformly high. Overall class attendance was 85%, with no officers missing more than 3/8 classes, promising statistics that were bolstered

Table 1 Participant demographics and work information

Characteristic	<i>N</i>	%
Gender		
Female	16	53
Male	14	47
Race		
Caucasian	26	87
Asian	1	3
Black	1	3
American Indian	1	3
Other/multiple	1	3
Ethnicity		
Hispanic or Latinx	5	17
Not Hispanic or Latinx	25	83
Work detail		
1st (~ 0600–1400)	12	40
2nd (~ 1200–0800)	5	17
3rd (~ 1400–2200)	9	30
4th (~ 2000–0400)	0	0
5th (~ 2200–0600)	4	13
Rank/job responsibilities		
Sergeant	3	10
Detective	2	7
Investigator	1	3
Officer in patrol	16	53
Officer, non-patrol role	8	27
Marital status		
Married	18	60
Unmarried relationship	7	23
Single	5	17
Divorced	0	0
	Mean	St. dev.
Age	38.4	7.7
Years police experience	10.8	7.5

by the department allowing officers to take part in classes during work hours.

Officers completed 91% of weekly practice logs and engaged in formal practice outside of class on average 43.0/56 days ($SD = 9.3$, range = 22–56), with an average of 83.8 total practice sessions ($SD = 34.3$, range = 32–170 occasions) and 870 average minutes of formal practice ($SD = 417$, range = 342–2140). This is equivalent to nearly 2 h of weekly formal, out-of-class practice over the 8-week period. As shown in Fig. 1a, linear mixed effects modeling of formal practice time showed a linear increase between weeks 1–8 ($t(29.9) = 2.24$, $p = 0.033$), with a high of 143 min in week 7 before falling off in week 8 (when no specific practices were assigned).

We also tracked “informal” practice, reflecting the integration of practices into daily activities. Participants reported engaging in informal practices on average 43.2/56 days ($SD = 12.6$, range = 10–56), and over 8 weeks estimated an average of 179 informal practice instances ($SD = 107$, range = 31–497). There was a significant linear increase in informal mindfulness practice occasions over the 8-week intervention ($t(30.0) = 2.59$, $p = 0.015$; Fig. 1b), with an increase from 17.3 occasions in week 1 to a high of 29.1 occasions in week 7.

Notably, the between-subject correlation between weekly formal practice time and estimated instances of informal practice was non-significant ($r(28) = .21$, $p = .26$; Fig. 1c), suggesting that officers’ proclivity to engage in formal mindfulness practice was unrelated to the frequency that they reported engaging in less formal mindfulness practices in daily living.

At the 5-month follow-up T3 assessment, 79% of participants reported continued formal practice on at least a weekly basis, with an average of 1.8 days/week of practice. The most commonly used practices at follow-up were the body scan (13/28 participants), sitting meditation (10/28 participants), and mindful movement (9/28 participants). Ninety-six percent of participants reported engaging in informal practice or moments of mindful awareness at least on a daily basis.

Collectively, these data suggest excellent adherence to the intervention requirements, with frequent formal and informal practice during the intervention period and some sustained practice engagement for most participants 5 months after the end of the intervention.

Acceptability: Study Procedures; Intervention Content, Practices, and Instructors

Participants had the opportunity to provide open-ended feedback about the behavioral measures, self-report measures, and physical procedures, which did not reveal any areas of concern with regard to acceptability. Feedback on the Fitbits was generally less positive. A number of participants found it difficult to charge devices or upload data over an 8-week period,

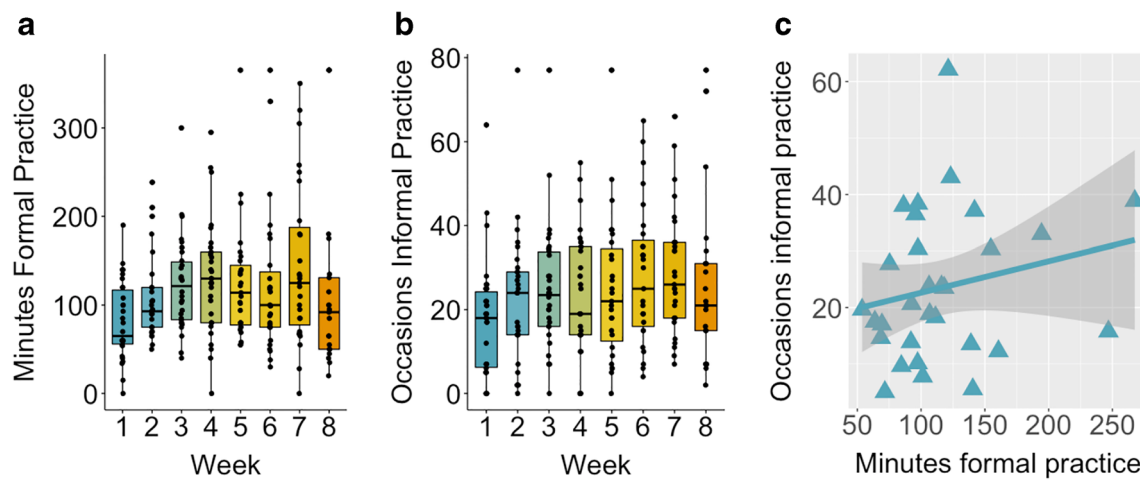


Fig. 1 Engagement in weekly formal and informal practice. **a** Participants completed an average of 109 min of weekly formal practice outside of class, with a significant linear increase from week 1 to 8 of the intervention ($t(29.9) = 2.24, p = 0.033$). **b** Participants estimated taking part in informal mindfulness practice on average 22 times/week, with a

significant linear increase from week 1 to 8 ($t(30.0) = 2.59, p = 0.015$). **c** There was no significant relationship between weekly time spent in formal mindfulness practice and self-reported occasions of informal practice ($r(28) = 0.21, p = 0.26$)

with 50% reporting moderate-to-severe annoyance with this aspect of the study and 30% of participants reported moderate-to-severe discomfort. This feedback suggests that researchers considering the incorporation of activity monitors should limit the data collection period and collect feedback on participant comfort and acceptability in pilot testing.

At the conclusion of each class, teachers distributed anonymous feedback forms with the following questions on a 5-point Likert scale from “disagree” to “agree”: (1) “What we did in class was relevant to my life”; (2) “I am clear about my mindfulness practice for the upcoming week”; (3) “I am becoming more familiar with mindfulness practice”; (4) “I am safe enough in class to explore mindfulness practice”; (5) “I felt understood by the teachers.” In weeks 1–2, 1–3 participants rated one or more of these statements as “neutral” or “somewhat disagree.” Between weeks 3 and 8, 100% of participants rated each of these statements as “moderately agree” or “agree,” indicating excellent acceptability for the class content, practices, context, and instructors.

Stress-Related Physical and Mental Health Outcomes

Effects on Perceived Job Stress and Burnout

The impact of 8 weeks of mindfulness training on organizational and operational stress was moderated by officers’ gender and years of police experience, respectively. For perceived organizational stress, decomposition of a significant Time*Gender interaction ($\chi^2(2, N = 9) = 7.23, p = .027$) suggested a steeper decline in stress for male vs. female officers at T2 ($t(58.2) = 2.59, p = .012$) and at T3 ($t(58.4) = 2.13, p = .038$; Fig. 2a). For perceived operational stress, which showed a significant Time*Years of Experience interaction

($\chi^2(2, N = 9) = 7.40, p = .025$), less experienced officers showed relatively greater declines in stress at T2 ($t(58.2) = 2.01, p = .049$) and T3 ($t(58.4) = 2.70, p = .009$) (Fig. 2b). For scores on both scales, sustained (and, in fact, enhanced) effects were observed at 5-month follow-up, at which time effect sizes were comparable to those observed in Christopher et al. (2016) (Table 2).

Reduced burnout was observed for the Exhaustion ($\chi^2(2, N = 7) = 9.88, p = .0072$) but not the Disengagement subscale ($\chi^2(2, N = 7) = 1.66, p = .44$) of the Oldenburg Burnout Inventory. Significant reductions in Exhaustion were seen at both T2 ($t(58.2) = -3.20, p = .0023$) and T3 ($t(58.2) = -2.21, p = .031$).

Effects on Mental Health and Well-being

Consistent with previous research (Christopher et al. 2016), mindfulness training had a large and significant effect on PROMIS anxiety symptoms ($\chi^2(2, N = 7) = 22.97, p < .001$; T2 $t(57.6) = -4.56, p < .001$; T3 $t(58.0) = -4.59, p < .001$). A trend reduction was observed for PROMIS depression symptoms ($\chi^2(2, N = 7) = 5.64, p = .060$). Increased psychological well-being was seen at T2 ($t(30) = -2.19, p = .036$), as was decreased negative affect on the PANAS ($t(30) = -2.92, p = .007$). There was no change in PANAS positive affect ($t(30) = 0.81, p = .42$).

Effects on Sleep and Physical Health

Consistent with previous research (Christopher et al. 2016), mindfulness training resulted in improved sleep quality as measured by the Pittsburgh Sleep Quality Inventory ($\chi^2(2, N = 7) = 11.98, p = .0025$). This improvement was significant at T2 ($t(56.4) = -3.65, p < .001$) and trending at T3

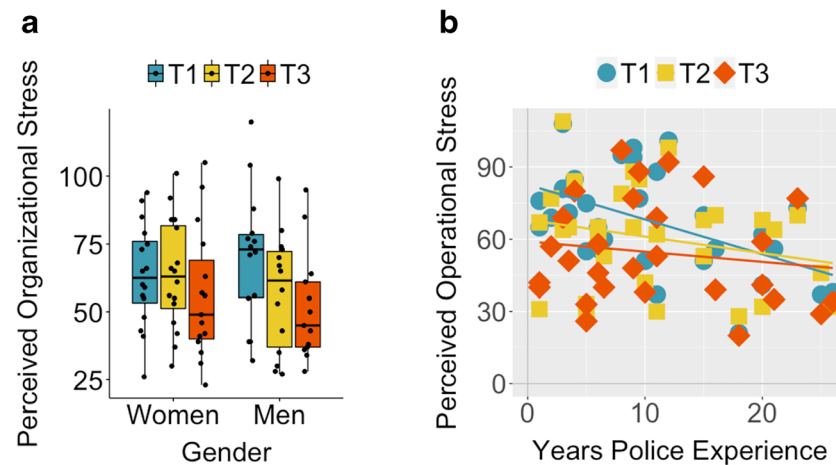


Fig. 2 Effects of mindfulness training on perceived organizational and operational stress. **a** For scores on the Organizational Police Stress Questionnaire, there was a significant Time*Gender interaction, driven by a steeper decline in stress for men vs. women at T2 ($t(58.2) = 2.59, p = 0.012$) and at T3 ($t(58.4) = 2.13, p = 0.038$). **b** For scores on the

Operational Police Stress Questionnaire, a significant Time*Years of Experience interaction reflected greater declines in stress for relatively less experienced officers at both T2 ($t(58.2) = 2.01, p = 0.049$) and T3 ($t(58.4) = 2.70, p = 0.0092$)

($t(56.4) = -1.78, p = .082$), although there were no changes in PROMIS fatigue or sleep disturbances scales ($\chi^2(2, N = 7) = 3.18, p = .20$; $\chi^2(2, N = 7) = 1.14, p = .57$). In contrast to previous work (Christopher et al. 2016), there were no effects on PROMIS subscales of pain interference ($\chi^2(2, N = 7) = 5.80, p = .055$), pain intensity ($\chi^2(2, N = 7) = 4.23, p = .12$), or physical functioning ($\chi^2(2, N = 7) = 4.05, p = .13$). We also saw no change on health-related productivity loss, as measured by the Work Limitations Questionnaire ($t(29) = 0.0, p = .00$).

We measured several physical health outcomes at T1 and T2 visits only. There were no intervention effects for any of these outcomes, including log-transformed high-sensitivity C-reactive protein, diastolic/systolic blood pressure, and resting pulse rate (all t s < 1.0, all p s > .4).

Symptoms of Posttraumatic Stress Disorder

Reduced PTSD Symptoms Following Mindfulness Training

Prior to mindfulness training, officers reported low-to-moderate levels of PTSD symptoms on the PCL (mean \pm SD = 29.9 ± 6.8), with 12/30 meeting a liberal suggested cutoff for subthreshold PTSD (> 32; Dickstein et al. 2015). Although only 1 participant met DSM-IV diagnostic criteria for all 3 symptom clusters, many participants met criteria for hyperarousal and re-experiencing symptoms (37% and 53%, respectively), with relatively few participants meeting criteria for avoidance symptoms (only 13%). The officer who met all diagnostic criteria had a total PCL score of 61, which was greater than 3 SD greater than the sample mean, and was excluded from further analyses (results were similar when including this officer).

Mindfulness training resulted in lower total PTSD symptoms on the PCL ($\chi^2(2, N = 7) = 12.65, p = .0018$), an effect that was observed immediately following the training ($t(56.1) = -3.55, p < .001$) and also at 5-month follow-up ($t(56.7) = -2.82, p = .0066$; Fig. 3a).

Investigation of individual symptom clusters revealed a significant effect of Time for re-experiencing symptoms ($\chi^2(2, N = 7) = 9.74, p = .0077$), which were no different at T2 ($t(56.2) = -1.35, p = .18$) but were reduced from baseline at T3 ($t(56.9) = -3.26, p = .0019$; Fig. 3b). There was no effect of Time for avoidance symptoms ($\chi^2(2, N = 7) = 2.18, p = .34$; Fig. 3c). For hyperarousal symptoms, a main effect of Time was qualified by a Time*Cohort interaction ($\chi^2(2, N = 10) = 7.74, p = .021$; Fig. 3d). Decomposition of this interaction revealed a reduction in hyperarousal for both cohorts at T2 (cohort 1: $t(14) = -2.70, p = .017$; cohort 2: $t(13) = -5.55, p < .001$). The second cohort of officers showed a larger reduction and only this cohort sustained symptom reductions at T3 (cohort 1: $t(12) = -0.96, p = .36$; cohort 2: $t(13) = -4.37, p < .001$).

Reductions in PTSD Symptoms Are Associated with Reductions in Perceived Stress But Not with Improved Sleep

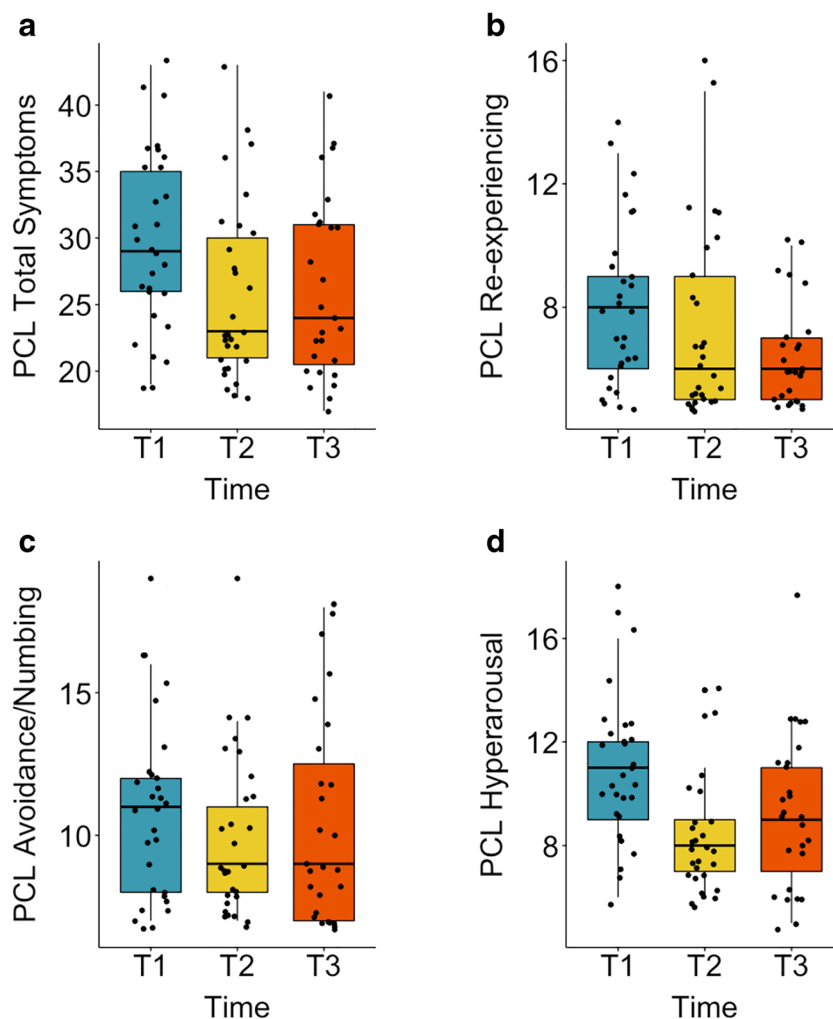
Previous research in urban police officers has shown stress associated with routine aspects of the work environment to be correlated with PTSD symptoms (Maguen et al. 2009). We replicated this relationship in the current sample at baseline both for perceived organizational ($r(27) = .55, p = .002$) and operational stress ($r(27) = .42, p = .02$). Moreover, we found that reductions in perceived

Table 2 Summary of self-report effects. Mean values for each self-report measure obtained from participants at Time 1 (baseline), Time 2 (immediately post-mindfulness training), and T3 (5-month follow-up). Significant interactions between Time and Gender, Years of Experience, and Cohort (class 1/class 2) are reported, and in the absence of such interactions we report the omnibus test of Time. For a significant omnibus effect of time, we indicate results of paired *t* tests comparing scores between T1 and both T2/T3. Regardless of statistical significance, effect sizes for each measure between T1-T2 and T1-T3 are provided, along with analogous T1-T2 effect sizes for a previous pilot study of a similar 8-week mindfulness intervention for police officers (Christopher et al. 2016). Italicized entries represent statistically significant effects at an uncorrected threshold of $p < 0.05$. *PSQI* Pittsburgh Sleep Quality Inventory; *PROMIS* Patient Reported Outcomes Measurement Information System (43-item inventory); *WLQ-8* Work Limitations Questionnaire, 8-item version; *PANAS* Positive and Negative Affective System

Measure	Time 1 Mean (SD)	Time 2 Mean (SD)	Time 3 Mean (SD)	Interactions (χ^2, p)	Main effect of time (χ^2, p)	T2-T1 (tp)	T3-T1 (tp)	T2-T1 d	T3-T1 d	Christopher et al. (2016) d
Police Stress Q'aire										
Organizational stress	66.6 (11.3)	60.8 (10.5)	54.0 (9.9)	<i>Time*Gender (7.23, .027)</i>				-0.37	-0.76	0.72
Operational stress	67.1 (12.0)	60.6 (10.4)	54.4 (12.0)	<i>Time*Years (7.40, .025)</i>				-0.42	-0.66	0.56
Oldenburg burnout total	39.4 (3.9)	37.1 (3.2)	38.0 (3.5)		5.92, .052			-0.44	-0.22	0.74
Exhaustion	20.2 (2.0)	18.6 (1.8)	19.0 (2.0)		<i>9.88, .0072</i>			-0.59	-0.36	
Disengagement	19.2 (2.4)	18.5 (2.0)	19.0 (2.1)		1.66, .44			-0.22	-0.05	
PSQI	7.6 (1.7)	5.9 (1.5)	6.5 (1.9)		<i>11.98, .0025</i>			-0.73	-0.28	
PROMIS scales										
Anxiety	12.0 (2.3)	9.4 (2.1)	9.3 (2.3)		<i>22.97, < .001</i>			-0.86	-0.76	
Depression	9.3 (2.2)	8.1 (1.4)	8.5 (2.2)		5.41, .067			-0.48	-0.29	
Fatigue	15.5 (3.4)	14.0 (3.4)	14.6 (3.2)		3.18, .20			-0.31	-0.20	0.59
Sleep disturbances	14.8 (3.1)	14.1 (3.5)	15.0 (3.5)		1.14, .57			-0.15	-0.05	0.74
Pain intensity	2.5 (1.1)	3.0 (1.2)	3.0 (0.9)		4.23, .12			0.30 ³	0.38 ³	
Pain interference	7.5 (2.6)	8.9 (2.7)	8.9 (2.0)		5.8, .055			0.35 ³	0.42 ³	0.37
Physical functioning	29.2 (1.0)	29.1 (0.8)	28.7 (1.0)		4.05, .13			0.10 ³	0.33 ³	
Social participation	15.5 (4.2)	14.0 (3.1)	13.9 (3.2)		3.46, .18			0.28 ³	0.22 ³	
PTSD checklist total	29.9 (4.5)	25.7 (4.9)	26.2 (3.9)		<i>12.65, .0018</i>			-0.58	-0.54	
Re-experiencing	8.0 (1.7)	7.3 (2.2)	6.4 (1.7)		<i>9.74, .0077</i>			-0.23	-0.76	
Avoidance	10.9 (2.5)	9.9 (2.4)	10.4 (2.7)		2.18, .34			-0.28	-0.03	
Hyperarousal	11.0 (1.6)	8.5 (1.7)	9.4 (1.2)	<i>Time*Cohort (7.74, .021)</i>				-1.01	-0.70	
WLQ-8 ¹	3.1 (2.0)	3.1 (2.0)			0, 1			0.00		
Psychol. well-being ¹	88.2 (5.0)	90.9 (5.0)			4.45, .035			-0.39		
PANAS¹										
Trait positive affect	36.8 (3.7)	37.6 (2.7)			0.65, .42			-0.15		
Trait negative affect	18.8 (2.7)	16.9 (2.7)			7.49, .0062			-0.52		

¹ Indicates measure was not obtained at the follow-up (T3) assessment. ² Values from Christopher et al. (2016) are for brief composite measures of physical health and mental health, respectively. ³ Effect sizes indicate *worsening* of this symptom relative to baseline

Fig. 3 Effects of mindfulness training on PTSD symptoms. **a** Total scores on the PTSD Checklist (PCL) showed a significant decline from baseline at T2 ($t(56.1) = -3.55, p < 0.001$) and T3 ($t(56.7) = -2.82, p = 0.0066$). **b** PTSD re-experiencing symptoms showed a significant decrease at T3 only ($t(56.9) = -3.26, p = 0.0019$; T2: $t(56.2) = -1.35, p = 0.18$). **c** There was no significant effect of mindfulness training on PTSD avoidance symptoms. **d** There was a significant Time*Cohort interaction for PTSD hyperarousal symptoms, with a significant decrease from baseline at T2 for both cohorts (cohort 1: $t(14) = -2.70, p = 0.017$; cohort 2: $t(13) = -5.55, p < 0.001$) and a sustained decrease at T3 for cohort 2 only (cohort 1: $t(12) = -0.96, p = 0.36$; cohort 2: $t(13) = -4.37, p < 0.001$)



stress were correlated with reductions in PTSD symptoms both at T2 (organizational stress: $r(27) = .40, p = .033$; operational stress: $r(27) = .30, p = .11$) and at T3 (organizational stress: $r(25) = .35, p = .078$; operational stress: $r(25) = .37, p = .060$).

Previous research has also identified an association between PTSD symptoms and impaired sleep (Chopko et al. 2018), which we replicated using baseline total PCL symptoms and sleep impairment on the PSQI ($r(27) = .41, p = .029$). Whereas this previous study identified relationships for both avoidance and hyperarousal, in the current study, this relationship was driven by hyperarousal symptoms alone ($r(27) = .61, p < .001$; for both re-experiencing and avoidance, $r(27) = .17, p = .37$). In spite of this baseline relationship, and in contrast to perceived stress findings, reductions in PTSD symptoms were not correlated with reductions in sleep impairment at T2 (total scores $r(27) = .16, p = .41$; individual subscales all $r_s < .23, p_s > .23$) or T3 (total scores $r(24) = .02, p = .92$; individual subscales all $r_s < .19, p_s > .36$).

Discussion

In this study of the impact of an 8-week mindfulness intervention in 30 Madison Police Department police officers, we collected extremely promising feasibility, acceptability, and adherence data and observed improvements in self-reported work stress, sleep quality, and mental health outcomes, replicating previous findings in Oregon police officers. We also collected the first evidence that a mindfulness-based intervention can reduce PTSD symptoms in police officers. This pilot study provides promising preliminary data for future well-powered, randomized trials that can establish robust evidence for treatment efficacy and mechanisms of action.

Following up on prior work with officers in the metro Portland (OR) area (Christopher et al. 2016, 2018), we sought to establish feasibility, acceptability, and protocol adherence for a modified 8-week mindfulness training program and research procedures in a new police department and metropolitan region. We were successful in recruiting and retaining our entire sample of 30 participants through the 8-week course

and Time 2 assessment and lost only 1 participant at follow-up online testing 5 months later. These participants were highly engaged in the training, attending 85% of classes, returning 91% of weekly practice logs, and completing an average of 109 min of formal mindfulness practice outside of weekly classes. Participants also reported frequent engagement in “informal” practices and moments of mindful awareness throughout the 8-week training period, demonstrating that they were successfully taking these practices “off the cushion” and integrating them into their daily lives. There are two key factors that we believe accounted for this high level of participation and engagement.

First, the training was co-delivered by two teachers who were not only expert mindfulness instructors, but who invested an extensive amount of time and effort before and during the study period gaining “cultural competency” around policing and learning about the stress associated with this profession. The instructors went on ride-alongs with officers, presented at in-service trainings, met extensively with officers on the training team, became familiar with the specific culture and history of this particular police department, and modified the practices and class content in response to these experiences and participant feedback. The impact of these efforts was reflected in near-universal feedback from participants that the class material was relevant to their lives, that they felt understood by teachers, and that they felt safe and comfortable engaging in practices that might be considered “weird” or “touchy-feely” if delivered without consideration of cultural and occupational factors specific to policing.

Second, these efforts by the instructors were accompanied by explicit statements of support by the police department and concrete actions that facilitated study participation by its officers. Participation was fully voluntary but also outwardly supported by the Chief of Police and others in leadership roles, front-line supervisors, and, critically, the police union. We worked with the department to identify class times that would facilitate participation with minimal impact on staffing and participants’ home lives, and we delivered the training at a police facility to provide officers with a sense of safety and familiarity. Officers were allowed to participate in classes during work hours whenever possible and received compensatory time when this was not feasible. Through explicit statements of support and concrete actions that facilitated participation, the department underscored its commitment to officer well-being and ensured the success of this pilot study.

We found that 8 weeks of mindfulness training led to significant reductions in perceived stress for stressors associated with policing, as well as the emotional exhaustion aspect of burnout. Perceived organizational stress showed a steep decline specifically for male officers, whereas perceived operational stress declined over time for less experienced officers in particular. The interaction with years of experience for operational stress may be partially attributable to the fact that less experienced officers are

more likely to work in less desirable positions and work shifts and to face greater exposure to operational stressors, and thus have greater room for improvement. It is unclear why mindfulness training would lead to a greater reduction in perceived organizational stress for male vs. female police officers. Additional research in larger samples is needed to illuminate this unexpected result—and, more generally, to understand differential stressor exposure and its impact for men vs. women in policing, a vastly understudied area (Hartley et al. 2014).

We replicated some but not all of the previously reported improvements in stress-related health outcomes noted by Christopher et al. (2016) in their previous pilot study of MBRT in Hillsboro (OR) police officers. We observed a significant improvement in subjective sleep quality on the PSQI immediately after the training, but (in contrast to this previous study) no changes on PROMIS scales of fatigue or sleep disturbances. We also observed an immediate large magnitude reduction in anxiety symptoms that persisted at 5-month follow-up, but only trend-level improvement in depression symptoms. State negative affect, a trait-like indicator of risk for mood and anxiety disorders, also showed a significant reduction following mindfulness training. We did not find evidence for improvement in any indicators of physical health outcomes, including PROMIS scales of pain intensity, pain interference, and overall physical functioning (each of which showed numeric, though not significant, *worsening* following mindfulness training). We also did not identify any impact of the training on resting heart rate, blood pressure, or serum levels of high-sensitivity C-reactive protein. Future, well-powered studies with an appropriate control group are needed to clarify what impact if any mindfulness training may have on stress-related physical health outcomes for police officers.

We report here the first empirical evidence that a mindfulness-based intervention can reduce symptoms of PTSD in a police population. This finding resonates with a previous correlational study that identified inverse relationships between facets of self-reported trait mindfulness and PTSD symptoms (Chopko and Schwartz 2013). Although most participants did not appear to meet diagnostic criteria for PTSD, about 1/3 met a more liberal cut-point of 33 that has previously been used to screen for potential subthreshold PTSD (Dickstein et al. 2015). This level of PTSD symptoms is consistent with that observed in a previous study of 193 officers from small- to mid-sized Midwest police departments (Chopko et al. 2018). This previous study used structural equation modeling to demonstrate an effect of PTSD symptoms on poorer sleep quality, which in turn mediated the relationship between PTSD symptoms and elevated depression and poorer physical health. Although we also identified a correlation at baseline between elevated PTSD symptoms (hyperarousal symptoms in particular) and poorer sleep quality on the PSQI, between-subject correlations between reductions in PTSD symptoms and sleep impairment were not significant.

In contrast, reductions in perceived organizational and operational stress were correlated with reduced PTSD symptoms. Although it may seem intuitive that critical incident exposure should dictate emergence of PTSD in police officers, stress associated with more routine daily work events has been shown to correlate more strongly with PTSD symptoms in experienced police officers (Lieberman et al. 2002) and those 1 year out of the academy (Maguen et al. 2009). Knowing that critical incident exposure is to some extent an intractable aspect of police work, preventative approaches to PTSD in law enforcement should focus on changing one's relationship to daily operational and organizational stressors. A fundamental tenet of mindfulness training is that even if external events are uncontrollable, we can exert control over the way in which we respond and relate to these events. Providing officers with greater perceived control over their environment and responses to stressful events may help buffer the impact of firsthand and vicarious trauma, an idea that is supported by the relationship between changes in perceived stress and PTSD symptoms.

Importantly, there were different trajectories of change for different PTSD symptom clusters. Large reductions in hyperarousal were observed immediately after mindfulness training and persisted at 5-month follow-up. At baseline, over half of participants indicated clinically significant levels of hyperarousal symptoms, which include disrupted sleep, distractibility, increased vigilance, and elevated startle responses. This is perhaps unsurprising as police training emphasizes constant "situational awareness" or scanning the external environment for potential sources of threat. This vigilance is adaptive in contexts where the likelihood of threat is high but can be maladaptive when indiscriminately applied in objectively safe, non-work contexts. In contrast to this external vigilance, mindfulness training encourages what one of our class participants referred to as "internal situational awareness," with practices that turn attention inward toward one's breath, body, thoughts, and emotions. These practices may increase officers' awareness of how they are responding in a particular situation and whether that response is appropriate given the current threat level, and also provide tools for regulating elevated arousal and "re-setting" in between challenging calls or at the end of a work shift. Our promising data on reduced hyperarousal will benefit from follow-up studies that identify the specific mechanisms that lead to symptom change, and whether self-reported symptom improvement is mirrored in objective reductions in hypervigilant behavior, sleep improvement, or physiological indices.

Reductions in re-experiencing were not observed immediately but emerged at 5-month follow-up, whereas there were no changes in avoidance symptoms at either time point. We hesitate to offer what would be purely speculative explanations for the delayed change in re-experiencing symptoms, given the small sample size and the observation that several participants showed unexpected *increases* at T2. The failure to

observe changes in avoidance following mindfulness training may be due to low baseline levels of these symptoms: only 13% of participants met DSM-IV criteria for these symptoms at baseline, vs. 53% and 37% for hyperarousal and re-experiencing symptoms, respectively. Furthermore, a particular challenge for assessing avoidance of internal experiences such as difficult thoughts, emotions, or memories—especially when using self-report measures—is that avoidant individuals may be especially unlikely to acknowledge or even recognize their tendency to avoid engaging with such experiences. Despite the absence of effects for mindfulness on avoidance symptoms, it remains of interest to continue investigating the potential impact of this training on these symptoms in larger samples and perhaps using alternative means of assessing experiential avoidance, such as interview techniques or behavioral assays. Training in mindfulness may provide an antidote to culturally engrained habits of emotional avoidance and suppression (Berking et al. 2010; Pogrebin and Poole 1995), encouraging officers instead to cultivate an attitude of acceptance and non-judgment for traumatic memories and the complex emotions these memories can elicit.

Notably, the effect sizes for reductions in perceived stress and re-experiencing PTSD symptoms were greater at 5-month follow-up than immediately post-intervention, and several other measures (anxiety, exhaustion, PTSD hyperarousal symptoms) also showed sustained improvements at T3 (Table 2). These findings are in contrast to recent findings from Christopher et al. (2018) who identified post-training reductions for perceived stress and other outcomes for MBRT vs. a wait-list group that were largely absent at their 3-month follow-up. Although differences in populations or the implementation of these trainings could account for this discrepancy in sustained impact, the absence of a control group in the current study is a significant limitation as there may be factors unrelated to the training resulting in lower levels of stress for officers at follow-up testing. Should future research validate the promising self-report findings from the current study and other work in this area, a clear challenge for researchers and practitioners to take on together is the development of supports and infrastructure to help sustain improvements in well-being beyond the acute aftermath of an intervention.

There are several limitations of this study, which are largely related to the primary aim being the assessment of feasibility and not intervention efficacy. Our experimental design did not include a control group and was not statistically powered to detect anything but large effects. In addition, most of the outcomes reported here are for self-report measures, which can suffer from responder bias, demand characteristics, and initial "elevation bias" (Shrout et al. 2017) that can confound apparent intervention effects in the absence of a control group. Furthermore, we elected to report intervention effects for all outcomes rather than pre-specifying a more limited number of primary outcomes, and we acknowledge the large number of

statistical tests that were conducted without any effort to control for multiple comparisons. Finally, while the percentage of female and non-white participants met or exceeded their respective proportions in the police department as a whole, our sample is less representative with regard to work shifts. Specifically, while we experimented with 2 different class times in an attempt to accommodate all schedules, 87% of participants worked days/evenings and only 13% worked overnight shifts, meaning we cannot make strong conclusions about intervention efficacy or acceptability for these “night fighters.”

We are currently conducting a follow-up randomized controlled trial in a much larger sample of police officers across different police agencies. This study seeks to establish the efficacy of mindfulness training for a variety of stress-related outcomes not limited to self-report, including hormonal and inflammatory biomarkers, objectively measured sleep and heart rate in the field, and behavioral assays that can speak to potential mechanisms of action. We are hopeful that this ongoing work will serve to more conclusively demonstrate the ways in which mindfulness training may promote more adaptive responses to the many stressors of policing, with consequent benefits for police officer health and—equally importantly—for the benefit of society as a whole.

Acknowledgments The authors thank Robin Goldman, John Koger, Mara Beebe, DK Jang, Cara Knoeppel, and the staff of the UW Hospital Clinical Research Unit for contributing to study design and data collection; Lori Gustafson for conducting focus groups; Sophia Diamantis for conducting interviews; Mike Christopher, Lt. Rich Goerling, and Brant Rodgers for providing consultation on the intervention; and members of the Madison Police Department for contributing to this project, including Ofc. Sue Carnell (ret.), Chief Kristen Roman (University of Wisconsin-Madison Police Department), Capt. Tim Patton, Capt. Tom Snyder (ret.), Capt. Mary Schauf (ret.), Capt. Brian Austin, Ofc. Dan Frei, Chief Mike Koval (ret.), and all of the study participants.

Funding Information This project was supported by the NIH (CTSA at UW-Madison grant UL1TR000427; NIMH grant K01MH117222) and by the University of Wisconsin-Madison School of Medicine and Public Health’s Wisconsin Partnership Program, WPP-ICTR grant #3086.

Compliance with Ethical Standards

Conflict of Interest Dr. Richard J. Davidson is the founder and president of, and serves on the board of directors for, the non-profit organization, Healthy Minds Innovations, Inc. The other authors report no conflicts of interest.

Ethical Approval All procedures performed in this study were in accordance with the ethical standards of the institutional research committee (University of Wisconsin-Madison Health Sciences IRB #2016-0675) and with the 1964 Helsinki declaration and its later amendments or comparable ethical standards.

Informed Consent Informed consent was obtained from all individual participants included in the study.

Appendix

Intervention Summary: First Responder Resilience and Mindfulness training

Overview of 8-week curriculum developed between July 2016 and June 2017. This curriculum was inspired by the Mindfulness-Based Resilience Training curriculum created by Mike Christopher, Rich Goerling, and Brant Rogers at Pacific University. We are deeply grateful to them for sharing their wisdom and experience with us.

Week 1: Introduction to resilience and mindfulness.

Content: Introduction of course/instructors/volunteer/participants. Definition of mindfulness, neuroplasticity and how we can foster greater resilience. Creation of community agreements and discussion of culture. Movement and body scan practices. Debriefing of session 1 practices.

Homework: Explanation of practice log. Formal practice: 9-min movement/9-min body scan 6 out of 7 days. Informal practice: “Dropping in” and 3 good breaths.

Week 2: Settling into resilience and mindfulness.

Content: Normalizing mind wandering and addressing other (mis)conceptions about doing the practices “correctly.” Movement, body scan, and debrief. Introduce walking practice.

Homework: Practice log. Formal practice: alternate 9-min movement/9-min body scan 6 out of 7 days. 5 min of walking practice 3 times. Informal practice: “Dropping in” and 3 good breaths.

Week 3: Meeting our experiences through resilience and mindfulness.

Content: Movement, exploration of physical posture, introduction to breath awareness practice, and debrief. Reading/video to reconnect to inspiration/motivation.

Homework: Practice log. Formal practice: alternate 9 min of movement/5 min of awareness of breath practice 6 out of 7 days a week. Informal practice: pleasant events calendar, integrated walking practice, and 3 good breaths.

Week 4: Meeting stress with resilience and mindfulness.

Content: Movement, breath awareness practice and debrief. Introduction of mindful eating.

Homework: Practice log. Formal practice: alternate 15 min of movement with 15 min of a breath awareness practice. Informal practice: integrated walking practice, unpleasant events calendar, and 3 good breaths.

Week 5: Reactivity, resilience, and mindfulness.

Content: Movement, breath awareness, and debrief. Reflection of practice and course at halfway point and resetting of intentions for the remaining 4 weeks. Introduction to compassion practice.

Homework: Practice log. Alternate movement/breath awareness practice with compassion practice 6 days out of 7.

Informal practice: walking practice (1× per week) and 3 good breaths.

Week 6: Response, resilience, and mindfulness.

Content: Movement, awareness of breath practice, compassion practices, and debriefing.

Discussion and preparation for the day of extended practice.

Homework: Practice log. Alternate between 15 min of awareness of breath and compassion practice. Informal practice: walking practice (1× per week), and 3 good breaths.

Week 7: Extended practice session (4 h).

Content: This session includes all of the previous practices of mMBRT along with mountain meditation and a period of silence.

Homework: Practice log. Participant decides his/her practice.

Week 8: Resilience and mindfulness: beginning again.

Content: Movement, breath awareness practice, and debriefing. Debriefing about course.

Implementation exercise. Review of resources and support for participants.

Homework: Practice log. Participant decides her/his practice.

References

- Berking M, Meier C, Wupperman P (2010) Enhancing emotion-regulation skills in police officers: results of a pilot controlled Study. *Behav Ther* 41(3):329–339. <https://doi.org/10.1016/j.beth.2009.08.001>
- Black DS, Slavich GM (2016) Mindfulness meditation and the immune system: a systematic review of randomized controlled trials. *Ann N Y Acad Sci*. <https://doi.org/10.1111/nyas.12998>
- Black, D. S., Reilly, G. A. O., Olmstead, R., Breen, E. C., Irwin, M. R., O'Reilly, G. A., ... Irwin, M. R. (2015). Mindfulness meditation and improvement in sleep quality and daytime impairment among older adults with sleep disturbances: a randomized clinical trial. *JAMA Intern Med*, 175(4), 494–501. <https://doi.org/10.1001/jamainternmed.2014.8081>
- Brown J, Campbell E (1990) Sources of occupational stress in the police. *Work & Stress* 4(4):305–318. <https://doi.org/10.1080/02678379008256993>
- Buysse DJ, Reynolds CF, Monk TH, Berman SR, Kupfer DJ (1989) The Pittsburgh sleep quality index: a new instrument for psychiatric practice and research. *Psychiatry Res* 28(2):193–213. [https://doi.org/10.1016/0165-1781\(89\)90047-4](https://doi.org/10.1016/0165-1781(89)90047-4)
- Chopko BA, Schwartz RC (2013) The relation between mindfulness and posttraumatic stress symptoms among police officers. *J Loss Trauma* 18(1):1–9. <https://doi.org/10.1080/15325024.2012.674442>
- Chopko, B. A., Palmieri, P. A., & Adams, R. E. (2018). Trauma-related sleep problems and associated health outcomes in police officers: a path analysis. *Journal of Interpersonal Violence*, 088626051876791. <https://doi.org/10.1177/0886260518767912>
- Christopher MS, Goerling RJ, Rogers BS, Hunsinger M, Baron G, Bergman AL, Zava DT (2016) A pilot study evaluating the effectiveness of a mindfulness-based intervention on cortisol awakening response and health outcomes among law enforcement officers. *J Police Crim Psychol* 31(1):15–28. <https://doi.org/10.1007/s11896-015-9161-x>
- Christopher, M. S., Hunsinger, M., Goerling, R. J., Bowen, S., Rogers, B. S., Gross, C. R., ... Pruessner, J. C. (2018). Mindfulness-based resilience training to reduce health risk, stress reactivity, and aggression among law enforcement officers: a feasibility and preliminary efficacy trial. *Psychiatry Res*, 264, 104–115. <https://doi.org/10.1016/j.psychres.2018.03.059>
- Cohen, S., & Williamson, G. (1988). Perceived stress in a probability sample of the United States. *The Social Psychology of Health* <https://doi.org/10.1111/j.1559-1816.1983.tb02325.x>
- Dickstein, B. D., Weathers, F. W., Angkaw, A. C., Nievergelt, C. M., Yurgil, K., Nash, W. P., ... Study, R. (2015). Diagnostic utility of the posttraumatic stress disorder (PTSD) checklist for identifying full and partial PTSD in active-duty military. <https://doi.org/10.1177/1073191114548683>
- Fox J, Desai MM, Britten K, Lucas G, Luneau R, Rosenthal MS (2012) Mental-health conditions, barriers to care, and productivity loss among officers in an urban police department. *Conn Med* 76(9):525–531
- Galatzer-Levy IR, Brown AD, Henn-Haase C, Metzler TJ, Neylan TC, Marmar CR (2013) Positive and negative emotion prospectively predict trajectories of resilience and distress among high-exposure police officers. *Emotion* 13(3):545–553. <https://doi.org/10.1037/a0031314>
- Goerling RJ (2012) Police officer resilience and community building. *Proceedings of ASBBS* 19(1):394–397
- Goyal, M., Singh, S., Sibinga, E. M. S., Gould, N. F., Rowland-Seymour, A., Sharma, R., ... Haythornthwaite, J. A. (2014). Meditation programs for psychological stress and well-being: a systematic review and meta-analysis. *JAMA Intern Med*, 174(3), 357–368. <https://doi.org/10.1001/jamainternmed.2013.13018>
- Halbesleben JRB, Demerouti E (2005) The construct validity of an alternative measure of burnout: investigating the English translation of the Oldenburg Burnout Inventory. *Work & Stress* 19(3):208–220. <https://doi.org/10.1080/02678370500340728>
- Hare TA, Tottenham N, Davidson MC, Glover GH, Casey BJ (2005) Contributions of amygdala and striatal activity in emotion regulation. *Biol Psychiatry* 57(6):624–632. <https://doi.org/10.1016/j.biopsych.2004.12.038>
- Hartley TA, Burchfiel CM, Fekedulegn D, Andrew ME, Violanti JM (2012) Health disparities in police officers: comparisons to the U.S. general populations. *International Journal of Emergency Mental Health* 13(3):211–220
- Hartley TA, Mnatsakanova A, Burchfiel CM, Violanti JM (2014) Stressors and associated health effects for women police officers. In: Violanti JM (ed) *Dying for the job: police work exposure and health*. Charles C. Thomas Publisher, Ltd., Springfield
- Khoury, B., Lecomte, T., Fortin, G., Masse, M., Therien, P., Bouchard, V., ... Hofmann, S. G. (2013). Mindfulness-based therapy: a comprehensive meta-analysis. *Clin Psychol Rev*, 33(6), 763–771. <https://doi.org/10.1016/j.cpr.2013.05.005>
- Lerner D, Amick B, Rogers W, Malspeis S, Bungay K, Cynn D, Amick (2002) The work limitations questionnaire 1. *Med Care* 39(1):72–85. <https://doi.org/10.1097/00005650-200101000-00009>
- Levinson DB, Stoll EL, Kindy SD, Merry HL, Davidson RJ (2014) A mind you can count on: validating breath counting as a behavioral measure of mindfulness. *Front Physiol* 5. <https://doi.org/10.3389/fpsyg.2014.01202>
- Liberman AM, Best SR, Metzler TJ, Fagan JA, Weiss DS (2002) Routine occupational stress and psychological distress in police. *Policing: An International Journal of Police Strategies & Management* 25(2):421–441. <https://doi.org/10.1108/13639510210429437>
- Maguen S, Metzler TJ, McCaslin SE, Inslicht SS, Henn-Haase C, Neylan TC, Marmar CR (2009) Routine work environment stress and PTSD symptoms in police officers. *J Nerv Ment Dis* 197(10):754–760. <https://doi.org/10.1097/NMD.0b013e3181b975f8>

- McCreary DR, Thompson MM (2006) Development of two reliable and valid measures of stressors in policing: the operational and organizational police stress questionnaires. *Int J Stress Manag* 13(4):494–518. <https://doi.org/10.1037/1072-5245.13.4.494>
- Neylan, T. C., Metzler, T. J., Best, S. R., Weiss, D. S., Fagan, J. A., Liberman, A. M., ... Marmar, C. R. (2002). Critical incident exposure and sleep quality in police officers. *Psychosom Med*, 64(2), 345–352. <https://doi.org/10.1097/00006842-200203000-00019>
- Patterson GT, Chung IW, Swan PG (2012) The effects of stress management interventions among police officers and recruits. *Campbell Syst Rev* 7. <https://doi.org/10.4073/csr.2012.7>
- Pogrebin MR, Poole ED (1995) Emotion management: a study of police response to tragic events. - *PsycNET. Social Perspectives on Emotion* 3:149–168 Retrieved from <https://psycnet.apa.org/record/1997-36435-007>
- Polusny MA, Erbes CR, Thuras P, Moran A, Lamberty GJ, Collins RC et al (2015) Mindfulness-based stress reduction for posttraumatic stress disorder among veterans a randomized clinical trial. *JAMA - Journal of the American Medical Association* 314(5):456–465. <https://doi.org/10.1001/jama.2015.8361>
- Rajaratnam SMW, Barger LK, Lockley SW, Shea SA, Wang W, Landrigan CP et al (2011) Sleep disorders, health, and safety in police officers. *JAMA* 306(23):2567–2578. <https://doi.org/10.1001/jama.2011.1851>
- Ramey SL, Downing NR, Franke WD (2009) Milwaukee police department retirees: cardiovascular disease risk and morbidity among aging law enforcement officers. *AAOHN J* 57(11):448–453. <https://doi.org/10.3928/08910162-20091019-02>
- Ryff CD, Keyes CL (1995) The structure of psychological well-being revisited. *Journal of Personality and Social Psychology* 69(4): 719–727 Retrieved from <http://www.ncbi.nlm.nih.gov/pubmed/7473027>
- Shrout PE, Stadler G, Lane SP, McClure MJ, Jackson G, Clavel F et al (2017) Initial elevation bias in subjective reports. *Proc Natl Acad Sci*. <https://doi.org/10.1073/pnas.1712277115>
- Violanti JM, Burchfiel CM, Miller DB, Andrew ME, Dorn J, Wactawski-Wende J et al (2006) The Buffalo Cardio-Metabolic Occupational Police Stress (BCOPS) Pilot Study: methods and participant characteristics. *Ann Epidemiol* 16(2):148–156. <https://doi.org/10.1016/j.annepidem.2005.07.054>
- Watson D, Clark LA, Tellegen A (1988) Development and validation of brief measures of positive and negative affect: the PANAS scales. *J Pers Soc Psychol* 54(6):1063–1070. <https://doi.org/10.1037/0022-3514.54.6.1063>
- Weathers, F., Litz, B., Herman, D., Huska, J., & Keane, T. (1993). The PTSD checklist (PCL): reliability, validity, and diagnostic utility. In *The annual convention of the international society for traumatic stress studies*. San Antonio, TX
- Weiss DS, Brunet A, Best SR, Metzler TJ, Fagan JA, Marmar CR (2010) Frequency and severity approaches to indexing exposure to trauma: the Critical Incident History Questionnaire for police officers. *J Trauma Stress* 23(6):734–743. <https://doi.org/10.1002/jts>

Publisher's Note Springer Nature remains neutral with regard to jurisdictional claims in published maps and institutional affiliations.